

8/4/2015  
 Wright R. Archer  
 WRIGHT R. ARCHER

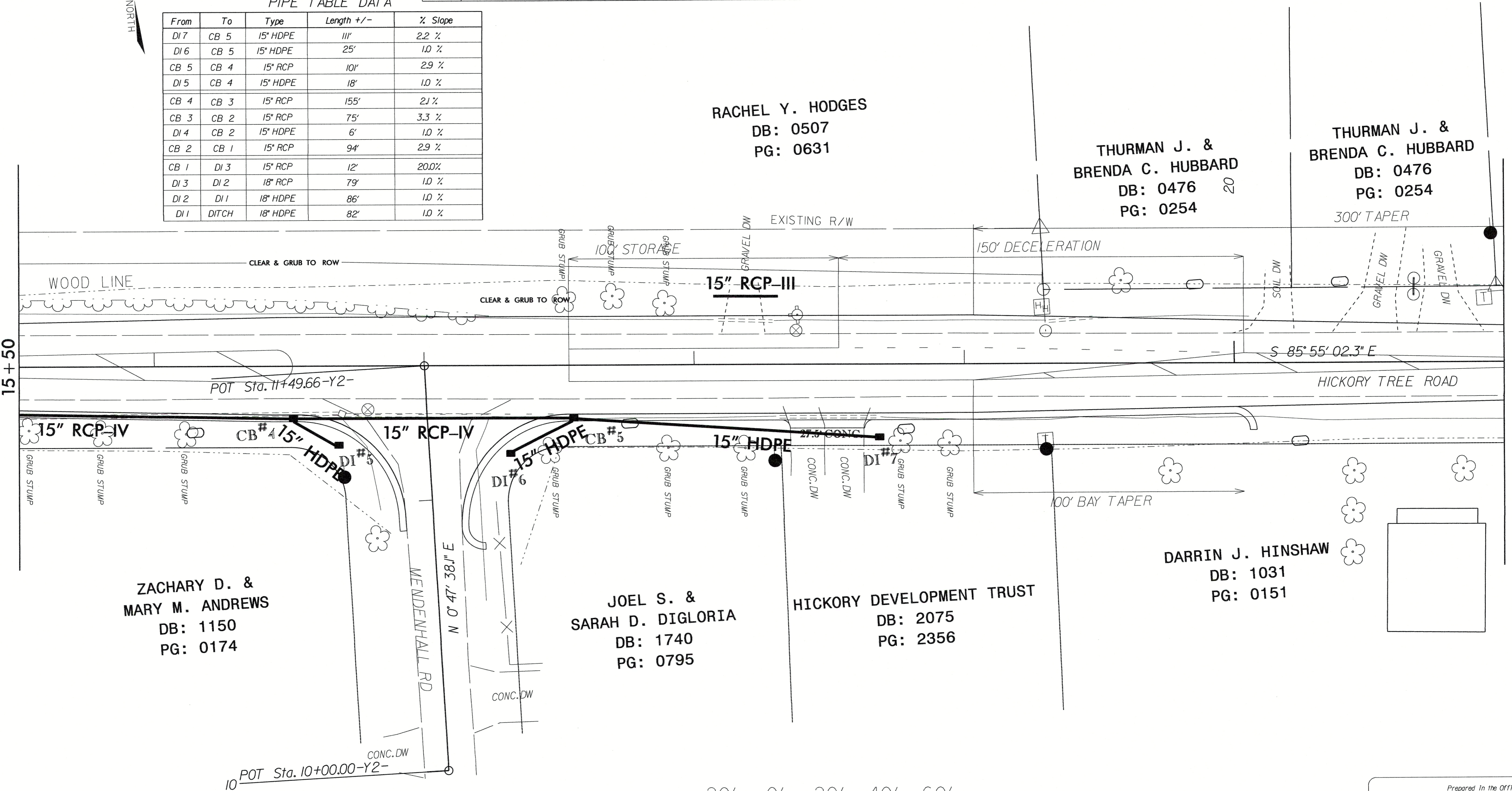
| CB | STATION       | B.O.C. | INVERT | GRATE |
|----|---------------|--------|--------|-------|
| 1  | 13 + 18.81-L- | 844.71 | 841.31 | G     |
| 2  | 14 + 15.90-L- | 847.43 | 844.03 | G     |
| 3  | 14 + 94.17-L- | 849.89 | 846.49 | G     |
| 4  | 16 + 51.60-L- | 854.57 | 849.78 | G     |
| 5  | 17 + 55.42-L- | 857.19 | 852.71 | G     |

| PIPES    |                        |
|----------|------------------------|
| Types    | Total Length (Approx.) |
| 15" RCP  | 513' +/-               |
| 15" HDPE | 161' +/-               |
| 18" RCP  | 79' +/-                |
| 18" HDPE | 168' +/-               |

| DRAINAGE STRUCTURES |             |                        |
|---------------------|-------------|------------------------|
| Structures          | Grate Types | Total Amount (Approx.) |
| CB's                | G           | 5                      |
| DI's                | NARROW      | 7                      |

PIPE TABLE DATA

| From | To    | Type     | Length +/- | % Slope |
|------|-------|----------|------------|---------|
| DI 7 | CB 5  | 15" HDPE | 111'       | 2.2 %   |
| DI 6 | CB 5  | 15" HDPE | 25'        | 1.0 %   |
| CB 5 | CB 4  | 15" RCP  | 101'       | 2.9 %   |
| DI 5 | CB 4  | 15" HDPE | 18'        | 1.0 %   |
| CB 4 | CB 3  | 15" RCP  | 155'       | 2.1 %   |
| CB 3 | CB 2  | 15" RCP  | 75'        | 3.3 %   |
| DI 4 | CB 2  | 15" HDPE | 6'         | 1.0 %   |
| CB 2 | CB 1  | 15" RCP  | 94'        | 2.9 %   |
| CB 1 | DI 3  | 15" RCP  | 12'        | 20.0 %  |
| DI 3 | DI 2  | 18" RCP  | 79'        | 1.0 %   |
| DI 2 | DI 1  | 18" HDPE | 86'        | 1.0 %   |
| DI 1 | DITCH | 18" HDPE | 82'        | 1.0 %   |

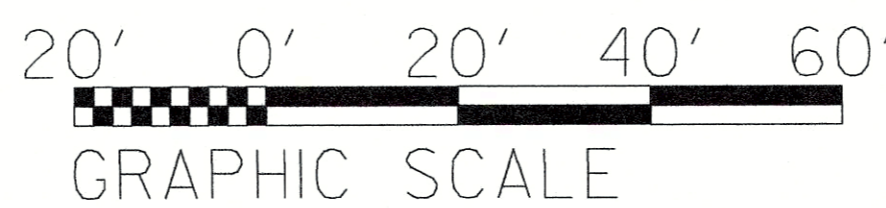


ZACHARY D. & MARY M. ANDREWS  
 DB: 1150  
 PG: 0174

JOEL S. & SARAH D. DIGLORIA  
 DB: 1740  
 PG: 0795

HICKORY DEVELOPMENT TRUST  
 DB: 2075  
 PG: 2356

DARRIN J. HINSHAW  
 DB: 1031  
 PG: 0151



| DATE     | REVISIONS            | APP. BY | DATE |
|----------|----------------------|---------|------|
| 11/18/14 | DRAINAGE & ROW       |         |      |
| 1/13/15  | ROW                  |         |      |
| 2/06/15  | ROW                  |         |      |
| 2/13/15  | PROP. ROW TO EX. ROW |         |      |
| 4/6/15   | STUMP REMOVAL        |         |      |

Prepared in the Office of:  
**DEPARTMENT OF TRANSPORTATION**  
 375 SILAS CREEK PKWY, WINSTON SALEM, NC 27127

2006 STANDARD SPECIFICATIONS

PROJECT NAME: HICKORY TREE @ MENDENHALL

W.O. NUMBER: NA

SR # / ROAD NAME: SR 1508 HICKORY TREE ROAD

DAVIDSON COUNTY

SCALE 1" = 20'

8/17/19  
 REVISIONS  
 04-AUG-2015\_08:45  
 C:\p0002268341\p0002268341\current\hickory tree rd @ mendenhall rd\dwgns\hickorytree.psh2.dgn  
 counter AT D:\p0002268341